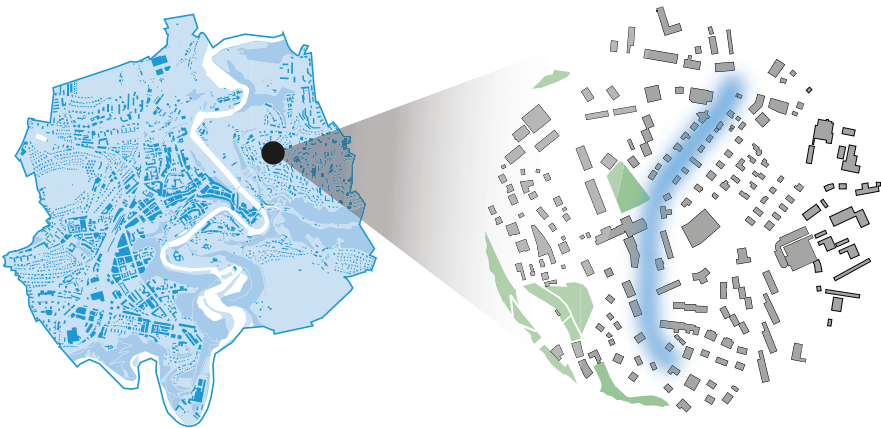






# Route Saint-Barthélemy



<b>Bruit</b>		 Jour	 Nuit	<b>Évolution</b>
Printemps 2023	30	60.9 dB(A)	46.3 dB(A)	>>
Printemps 2024		60.1 dB(A)	46.3 dB(A)	
<b>Vitesse</b>		 Jour	 Nuit	<b>Évolution</b>
Printemps 2023	30	49 km/h	51 km/h	>>
Printemps 2024		35 km/h	36 km/h	
<b>Trafic journalier moyen - TJM</b>				<b>Évolution</b>
Printemps 2023	30	4'235		>>
Printemps 2024		5'687		

</

